

Report No.:

Test Time: 2021/3/15 9:28:51

## LUMINAIRE PHOTOMETRIC TEST REPORT

### Luminaire Property

Manufacturer: 0

Luminaire Type: 12W

Lamp Type:

Luminous Width: 0 mm

Luminous Length: 0 mm

Luminous Height: 0 mm

Voltage(V): 219.72 V

Current(A): 0.0550 A

Power(W): 11.79 W

Power Factor: 0.9650

Lamp Luminous Flux: 942.49

### Photometric Results

CIE Class: Direct

Luminaire Luminous Flux: 942.4906

Downward Ratio: 100.00%

Luminaire Efficacy Rating(LER): 79.95 lm/W

Beam Angle(50%) C0-180,C90-270: 57.4,57.8

Field Angle(10%) C0-180,C90-270: 74.0,74.1

Max. Intensity: 1174.00 cd

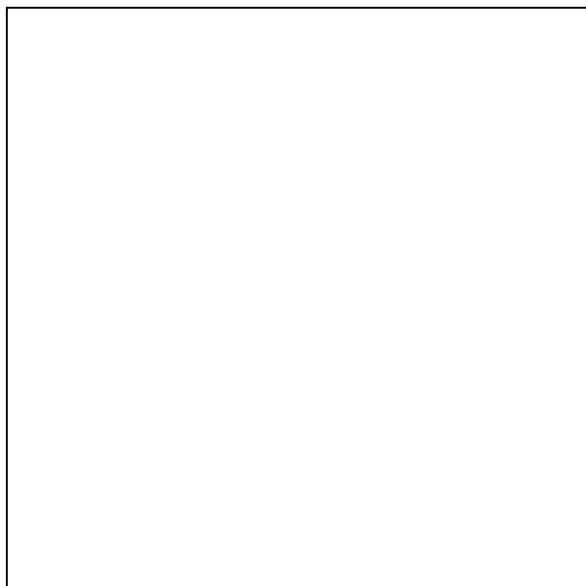
Max.Intensity Angle: C=270 Gamma=4

Upward Ratio: 0.00%

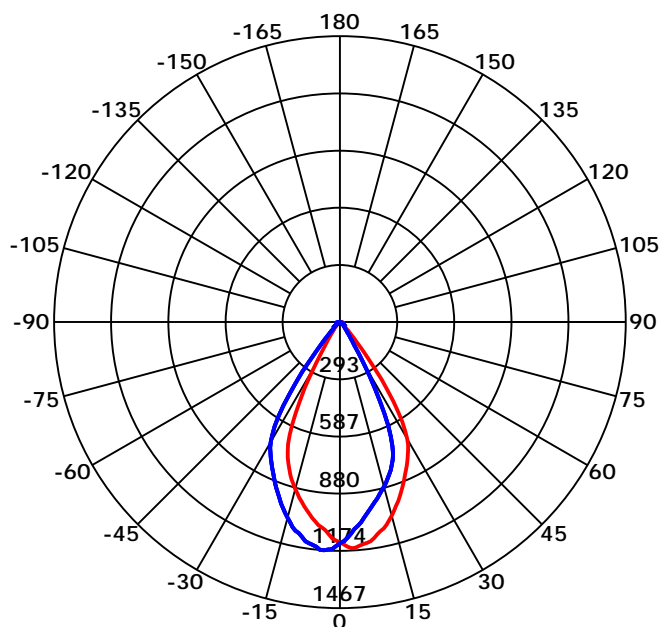
Efficacy: 100.00%

Center Intensity: 1129.98 cd

Picture of Luminaire



Luminous Intensity Distribution Curve



Beam Angle(50%) C0-180,C90-270: 57.4 deg,57.8 deg

C0-180 — C90-270 —

C Range: 0 - 360 Deg

C Interval: 45.0 Deg

Test Speed: High

Temperature:

Operators:

Test Date: 2021/3/15 9:28:51

G Range: 0 - 90 Deg

G Interval: 1.0 Deg

Test System: Huipu CPM-1800B Goniophotometer

Humidity:

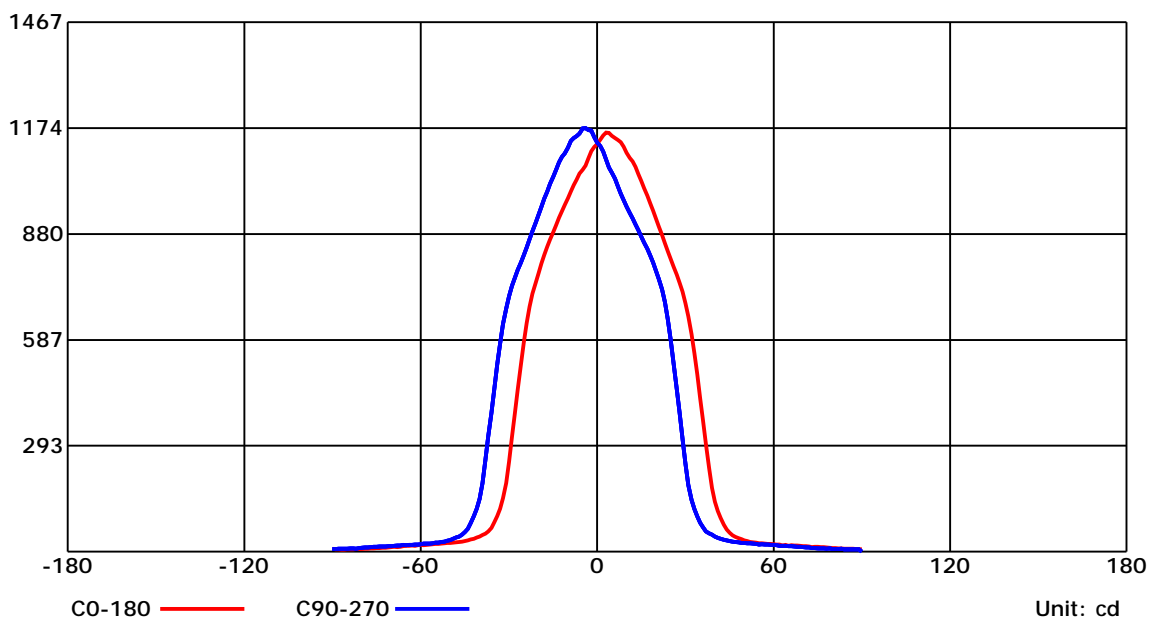
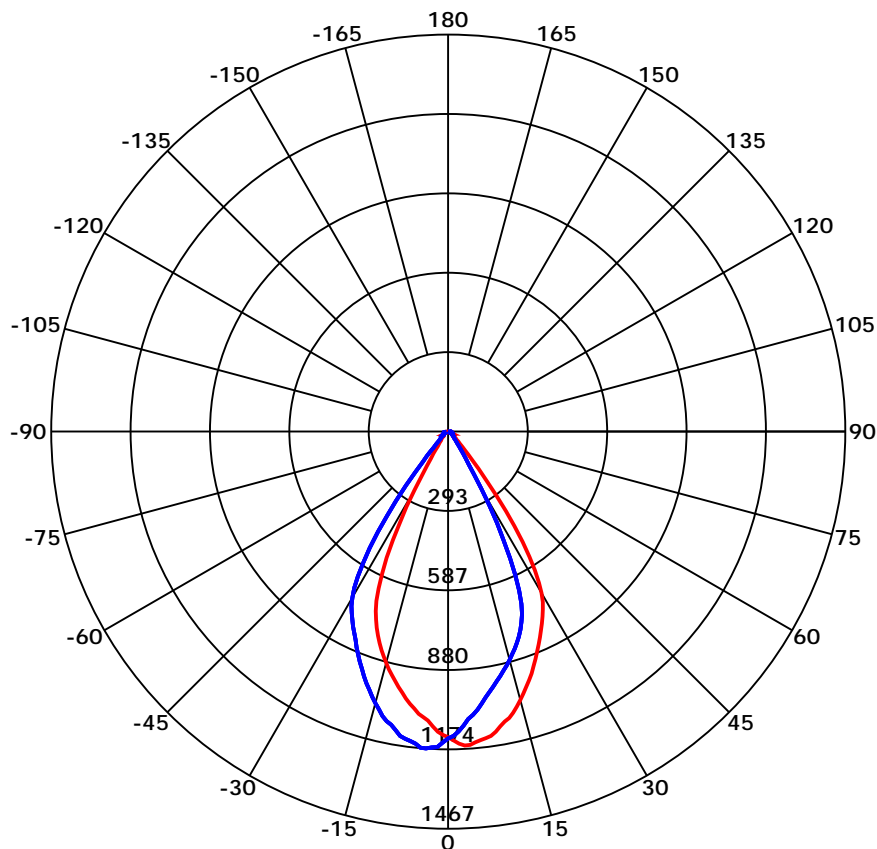
Test Distance: 6.029 m

Remarks:

Report No.:

Test Time: 2021/3/15 9:28:51

## Luminous Intensity Distribution Curve



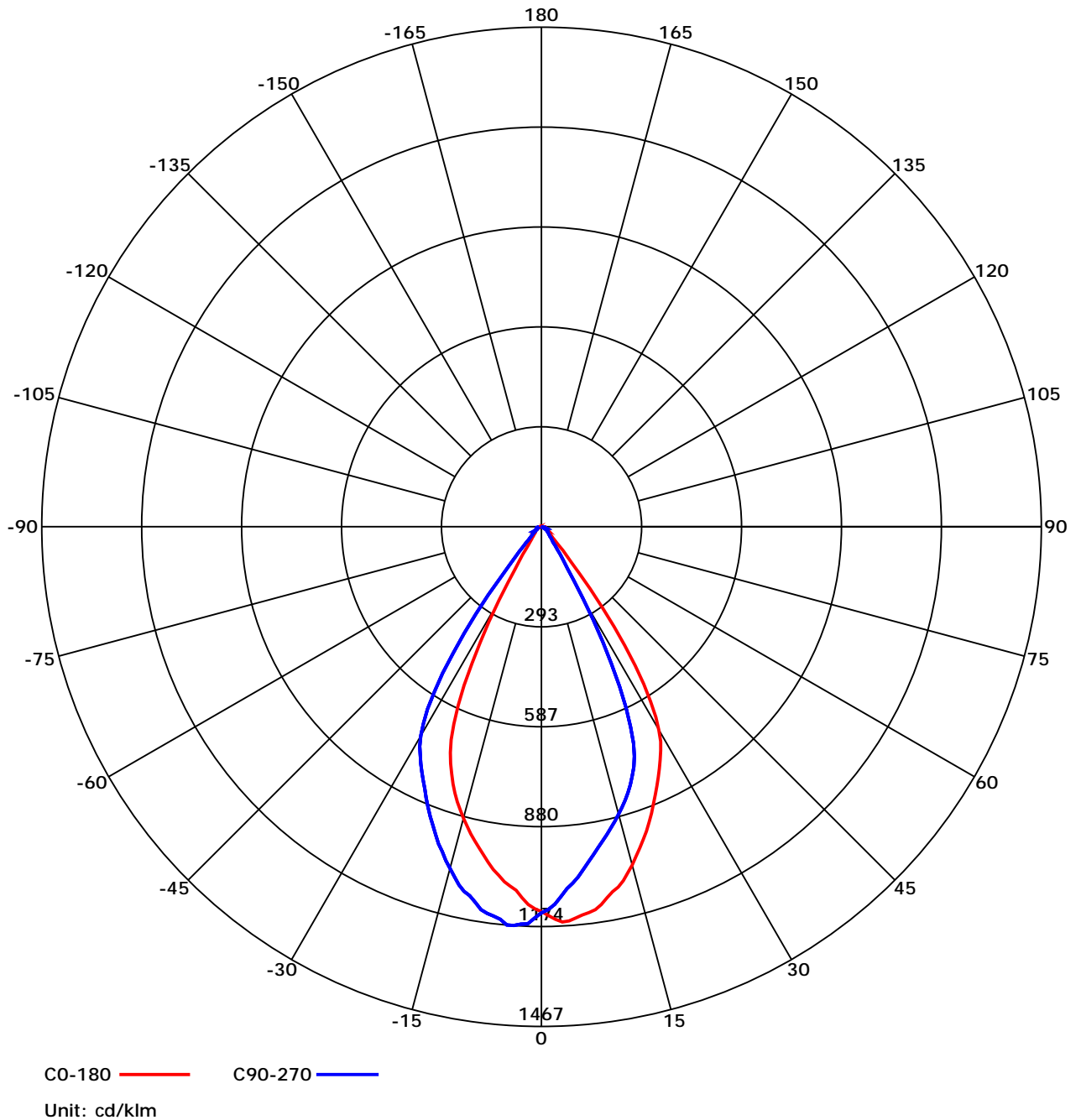
C Range: 0 - 360 Deg  
 C Interval: 45.0 Deg  
 Test Speed: High  
 Temperature:  
 Operators:  
 Test Date: 2021/3/15 9:28:51

G Range: 0 - 90 Deg  
 G Interval: 1.0 Deg  
 Test System: Huipu CPM-1800B Goniophotometer  
 Humidity:  
 Test Distance: 6.029 m  
 Remarks:

Report No.:

Test Time: 2021/3/15 9:28:51

## Luminous Intensity Distribution Curve



C Range: 0 - 360 Deg  
C Interval: 45.0 Deg  
Test Speed: High  
Temperature:  
Operators:  
Test Date: 2021/3/15 9:28:51

G Range: 0 - 90 Deg  
G Interval: 1.0 Deg  
Test System: Huipu CPM-1800B Goniophotometer  
Humidity:  
Test Distance: 6.029 m  
Remarks:

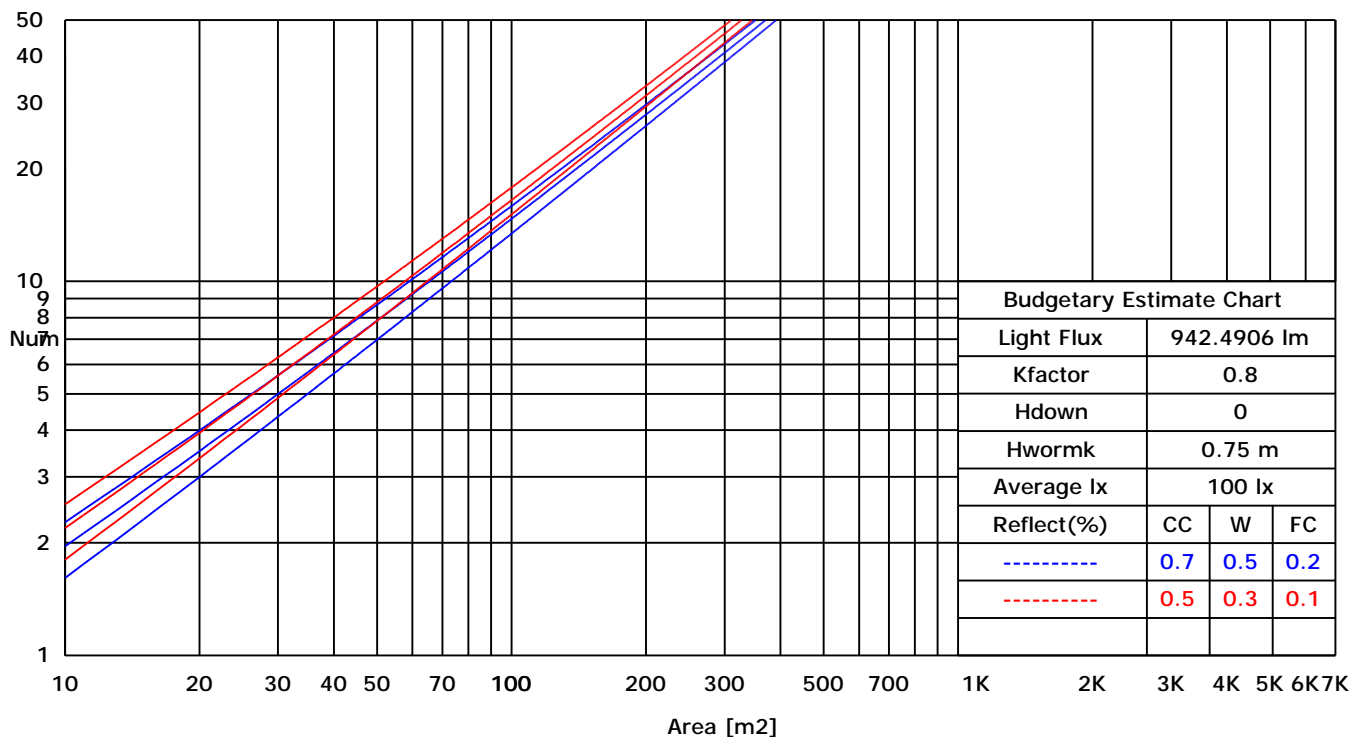
Report No.:

Test Time: 2021/3/15 9:28:51

## UTILIZATION FACTORS TABLE

RHOCC	80			70			50			30			10			0
RHOW	50	30	10	50	30	10	50	30	10	50	30	10	50	30	10	0
RCR	COEFFICIENTS OF UTILIZATION FOR RHOFC=20															
0	1.19	1.19	1.19	1.16	1.16	1.16	1.11	1.11	1.11	1.06	1.06	1.06	1.02	1.02	1.02	1.00
1	1.05	1.04	1.02	1.04	1.02	1.00	1.00	0.98	0.96	0.95	0.93	0.91	0.89	0.87	0.85	0.79
2	1.00	0.98	0.97	0.99	0.97	0.95	0.96	0.93	0.91	0.91	0.89	0.86	0.86	0.83	0.80	0.76
3	0.95	0.94	0.92	0.94	0.92	0.90	0.91	0.89	0.86	0.88	0.85	0.82	0.83	0.80	0.77	0.72
4	0.91	0.90	0.88	0.90	0.88	0.87	0.88	0.85	0.83	0.84	0.81	0.78	0.80	0.77	0.73	0.69
5	0.88	0.86	0.85	0.87	0.84	0.83	0.84	0.81	0.79	0.81	0.78	0.75	0.78	0.74	0.71	0.67
6	0.84	0.83	0.82	0.83	0.81	0.80	0.81	0.78	0.76	0.79	0.75	0.72	0.75	0.71	0.68	0.64
7	0.81	0.80	0.79	0.80	0.78	0.77	0.78	0.75	0.73	0.76	0.72	0.70	0.73	0.69	0.66	0.62
8	0.79	0.77	0.76	0.78	0.76	0.75	0.76	0.73	0.71	0.74	0.70	0.67	0.71	0.67	0.63	0.60
9	0.76	0.75	0.74	0.75	0.73	0.72	0.73	0.71	0.69	0.71	0.68	0.65	0.69	0.65	0.61	0.58
10	0.74	0.73	0.72	0.73	0.71	0.70	0.71	0.68	0.67	0.69	0.66	0.63	0.67	0.63	0.60	0.56

## LUMINAIRE BUDGETARY ESTIMATE DIAGRAM



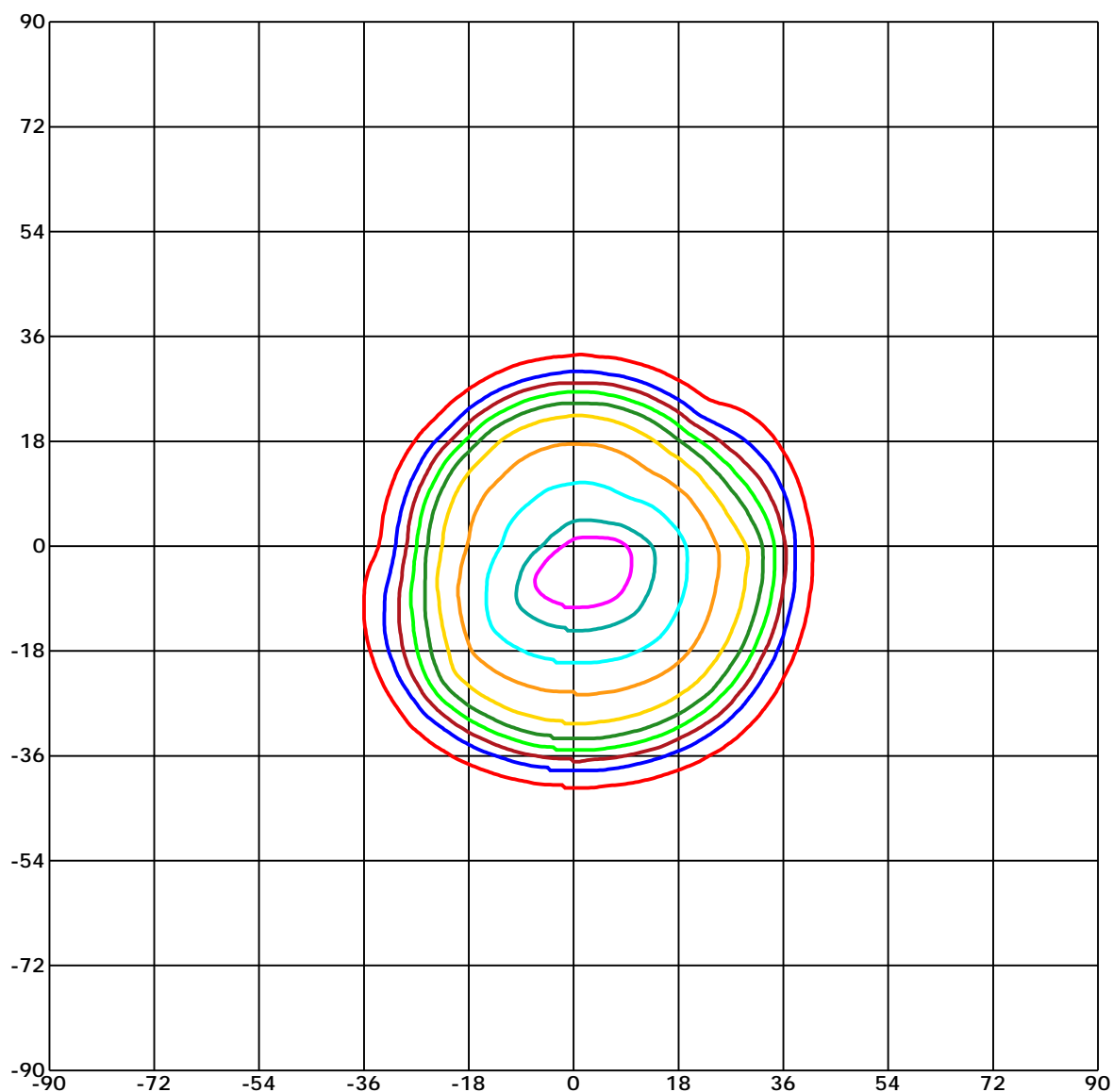
C Range: 0 - 360 Deg  
C Interval: 45.0 Deg  
Test Speed: High  
Temperature:  
Operators:  
Test Date: 2021/3/15 9:28:51

G Range: 0 - 90 Deg  
G Interval: 1.0 Deg  
Test System: Huipu CPM-1800B Goniophotometer  
Humidity:  
Test Distance: 6.029 m  
Remarks:

Report No.:

Test Time: 2021/3/15 9:28:51

## ISOCANDELA DIAGRAM (RECTANGULAR)



Unit of intensity:cd      I<sub>max</sub>(100%): 1173.995 cd

1115.295(95%I <sub>max</sub> )	586.997(50%I <sub>max</sub> )
1056.595(90%I <sub>max</sub> )	469.598(40%I <sub>max</sub> )
939.196(80%I <sub>max</sub> )	352.198(30%I <sub>max</sub> )
821.796(70%I <sub>max</sub> )	234.799(20%I <sub>max</sub> )
704.397(60%I <sub>max</sub> )	117.4(10%I <sub>max</sub> )

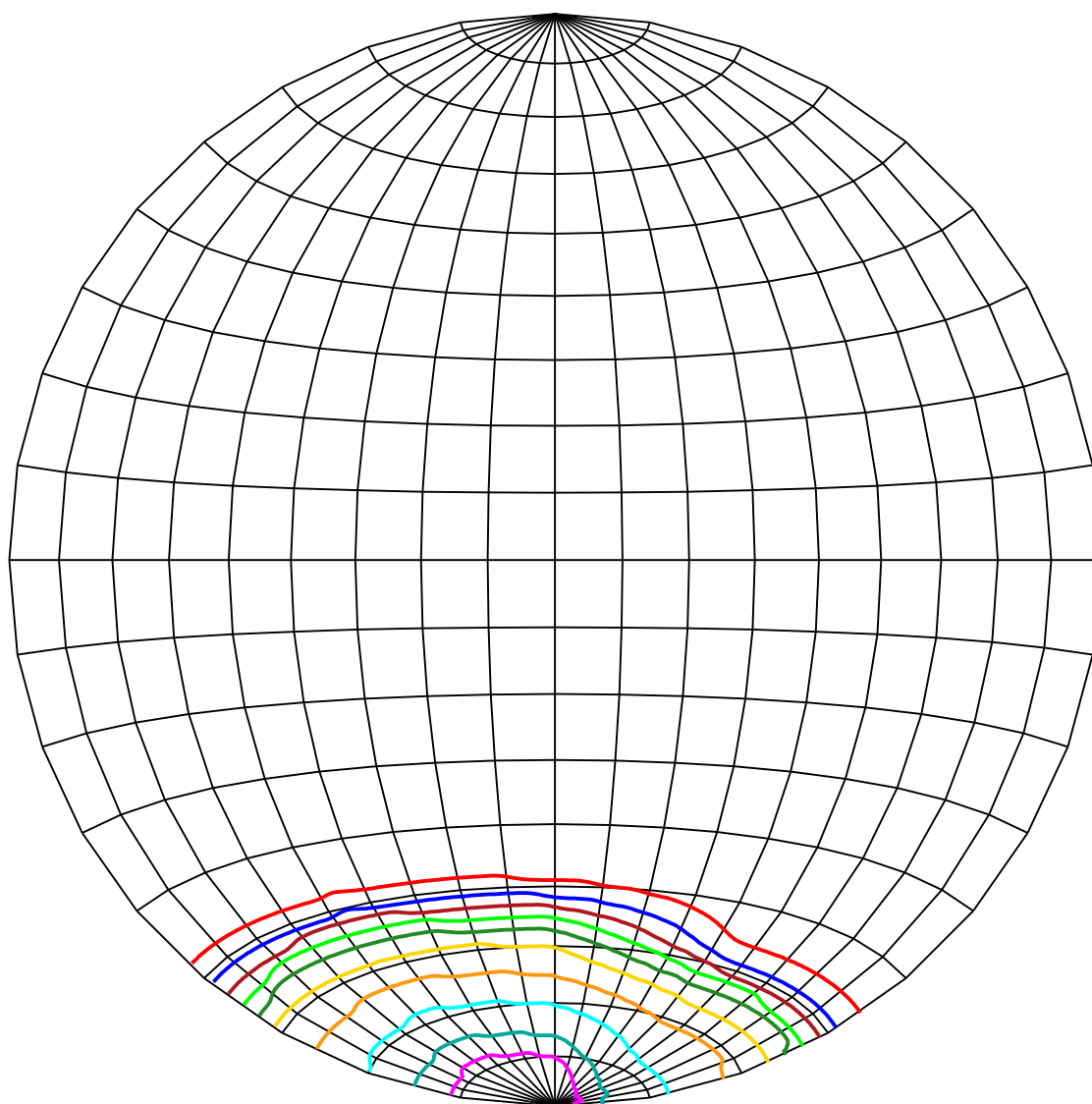
C Range: 0 - 360 Deg  
C Interval: 45.0 Deg  
Test Speed: High  
Temperature:  
Operators:  
Test Date: 2021/3/15 9:28:51

G Range: 0 - 90 Deg  
G Interval: 1.0 Deg  
Test System: Huipu CPM-1800B Goniophotometer  
Humidity:  
Test Distance: 6.029 m  
Remarks:

Report No.:

Test Time: 2021/3/15 9:28:51

## ISOCANDELA DIAGRAM (SPHERE)



Unit of intensity:cd      Imax(100%): 1173.995 cd

1115.295(95%Imax)	586.997(50%Imax)
1056.595(90%Imax)	469.598(40%Imax)
939.196(80%Imax)	352.198(30%Imax)
821.796(70%Imax)	234.799(20%Imax)
704.397(60%Imax)	117.4(10%Imax)

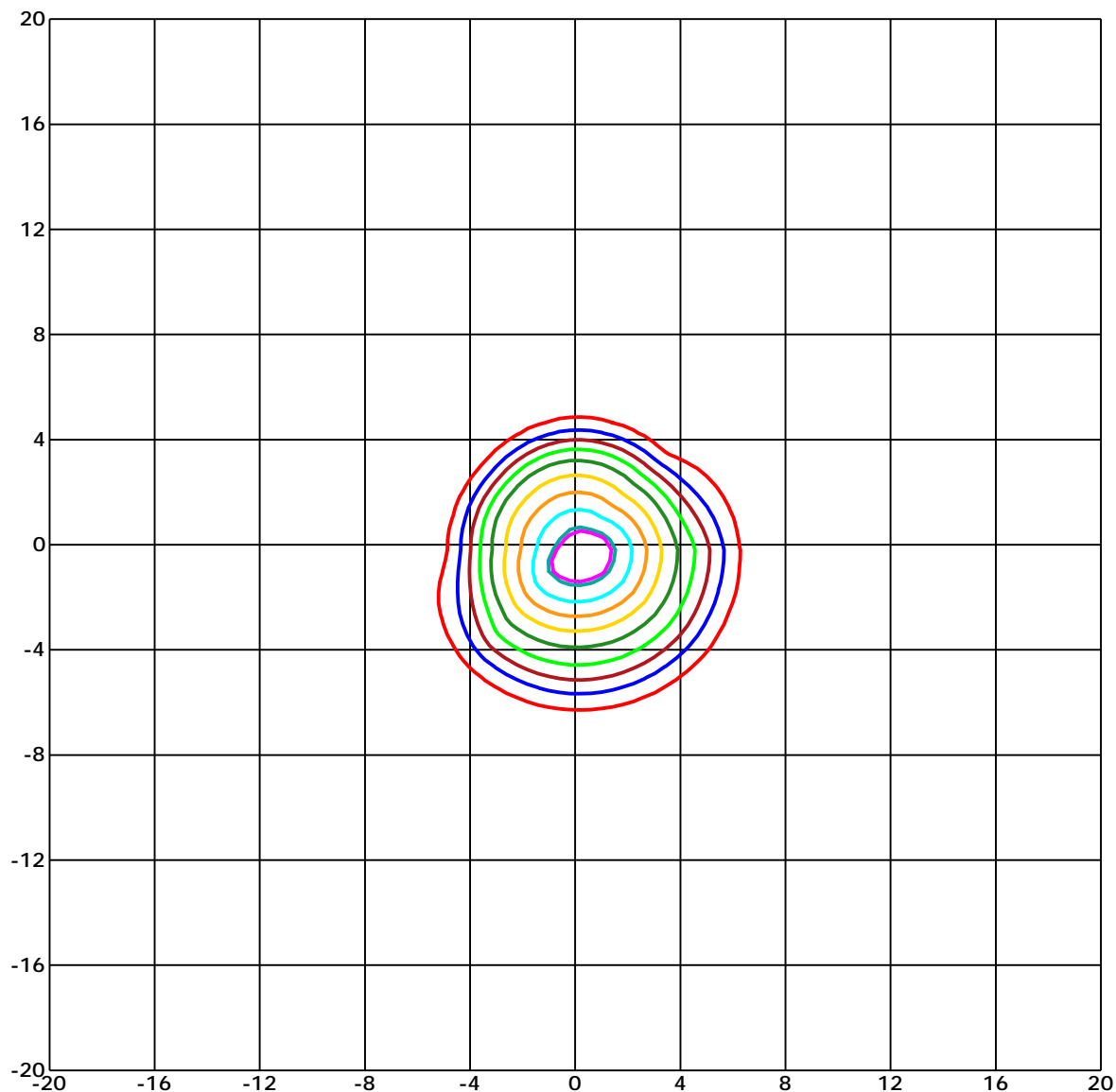
C Range: 0 - 360 Deg  
C Interval: 45.0 Deg  
Test Speed: High  
Temperature:  
Operators:  
Test Date: 2021/3/15 9:28:51

G Range: 0 - 90 Deg  
G Interval: 1.0 Deg  
Test System: Huipu CPM-1800B Goniophotometer  
Humidity:  
Test Distance: 6.029 m  
Remarks:

Report No.:

Test Time: 2021/3/15 9:28:51

## ISOLX DIAGRAM



Unit of illumination: lx Height of plane: 8.0(m)/26.25(ft)

16.762(1%Emax)	9.11(1%Emax)
16.398(1%Emax)	7.288(1%Emax)
14.576(1%Emax)	5.466(0%Emax)
12.754(1%Emax)	3.644(0%Emax)
10.932(1%Emax)	1.822(0%Emax)

C Range: 0 - 360 Deg

C Interval: 45.0 Deg

Test Speed: High

Temperature:

Operators:

Test Date: 2021/3/15 9:28:51

G Range: 0 - 90 Deg

G Interval: 1.0 Deg

Test System: Huipu CPM-1800B Goniophotometer

Humidity:

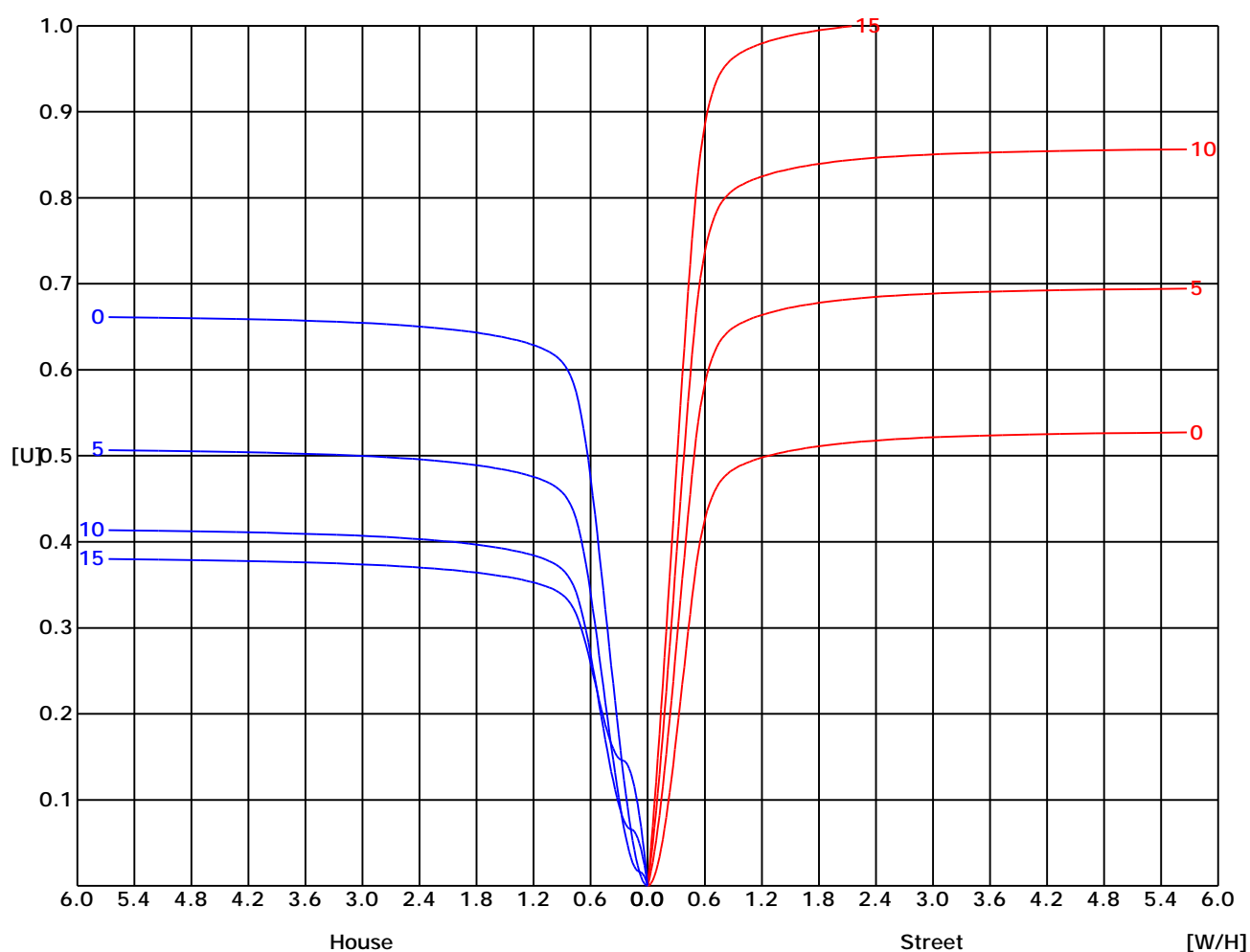
Test Distance: 6.029 m

Remarks:

Report No.:

Test Time: 2021/3/15 9:28:51

## UTILIZATION FACTOR DIAGRAM (ROAD)



C Range: 0 - 360 Deg  
 C Interval: 45.0 Deg  
 Test Speed: High  
 Temperature:  
 Operators:  
 Test Date: 2021/3/15 9:28:51

G Range: 0 - 90 Deg  
 G Interval: 1.0 Deg  
 Test System: Huipu CPM-1800B Goniophotometer  
 Humidity:  
 Test Distance: 6.029 m  
 Remarks:

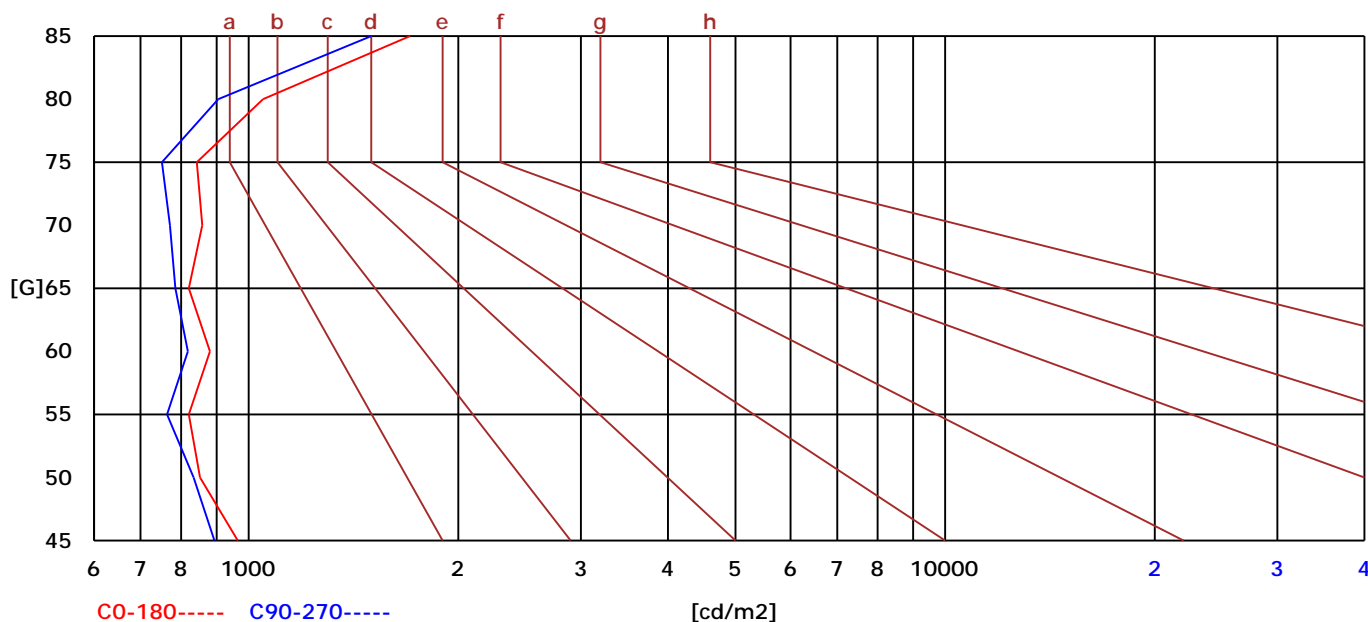


Report No.:

Test Time: 2021/3/15 9:28:51

## BRIGHT LIMIT DIAGRAM

C/G	45	50	55	60	65	70	75	80	85
C0	965	852	821	880	821	858	843	1049	1705
C90	893	834	764	818	785	771	751	905	1501
Dazzle	Quality	Illuminance	---	---	---	---	---	---	---
1.15	A	2000	1000	500	<=300				
1.5	B		2000	1000	500	<=300			
1.85	C			2000	1000	500	<=300		
2.2	D				2000	1000	500	<=300	
2.55	E					2000	1000	500	<=300
---	---	a	b	c	d	e	f	g	h



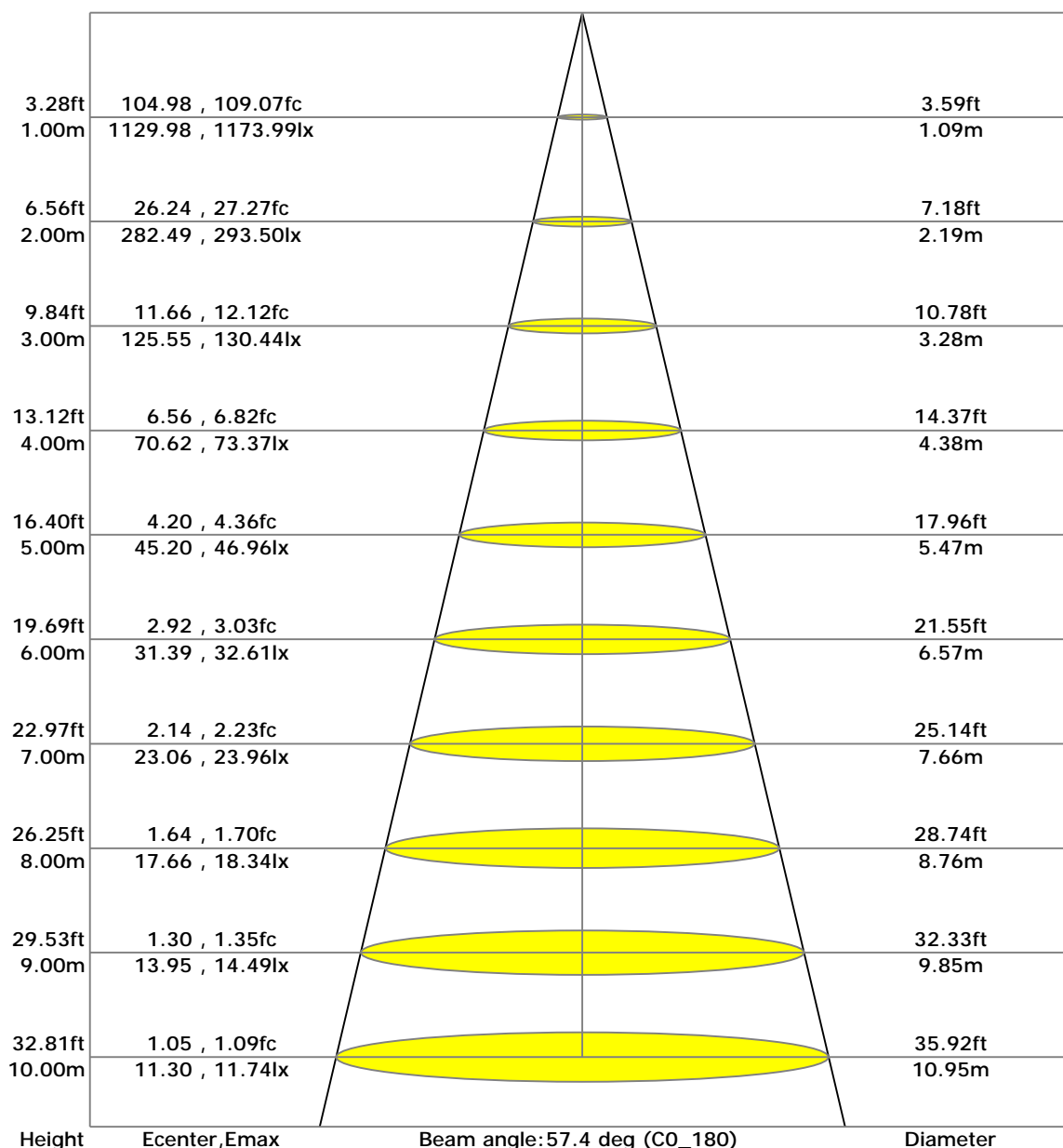
C Range: 0 - 360 Deg  
 C Interval: 45.0 Deg  
 Test Speed: High  
 Temperature:  
 Operators:  
 Test Date: 2021/3/15 9:28:51

G Range: 0 - 90 Deg  
 G Interval: 1.0 Deg  
 Test System: Huipu CPM-1800B Goniophotometer  
 Humidity:  
 Test Distance: 6.029 m  
 Remarks:

Report No.:

Test Time: 2021/3/15 9:28:51

## LX-DISTANCE DIAGRAM



C Range: 0 - 360 Deg  
C Interval: 45.0 Deg  
Test Speed: High  
Temperature:  
Operators:  
Test Date: 2021/3/15 9:28:51

G Range: 0 - 90 Deg  
G Interval: 1.0 Deg  
Test System: Huipu CPM-1800B Goniophotometer  
Humidity:  
Test Distance: 6.029 m  
Remarks:

Report No.:

Test Time: 2021/3/15 9:28:51

## UGR(Unified Glare Rating) TABLE

RHOCC	70	70	50	50	30	70	70	50	50	30
RHOW	70	70	50	50	30	70	70	50	50	30
RHOF	20	20	20	20	20	20	20	20	20	20
Room Size X Y	Viewed Endwise					Viewed Crosswise				
2H 2H	9.28	9.34	9.48	9.52	9.77	6.85	6.90	7.05	7.09	7.33
3H	9.31	9.36	9.51	9.55	9.80	6.94	6.99	7.14	7.18	7.43
4H	9.30	9.36	9.51	9.55	9.80	6.96	7.01	7.17	7.21	7.45
6H	9.29	9.34	9.51	9.54	9.80	6.96	7.01	7.17	7.21	7.46
8H	9.28	9.33	9.50	9.54	9.79	6.95	7.00	7.17	7.20	7.46
12H	9.27	9.32	9.49	9.53	9.78	6.94	6.99	7.16	7.20	7.45
4H 2H	10.52	10.57	10.73	10.77	11.01	8.55	8.60	8.76	8.80	9.04
3H	10.65	10.70	10.87	10.91	11.16	8.79	8.84	9.01	9.05	9.30
4H	10.69	10.74	10.92	10.95	11.21	8.88	8.93	9.11	9.14	9.40
6H	10.71	10.76	10.95	10.98	11.24	8.95	9.00	9.19	9.22	9.48
8H	10.71	10.76	10.96	10.99	11.25	8.97	9.02	9.21	9.24	9.51
12H	10.71	10.75	10.96	10.99	11.26	8.97	9.02	9.22	9.25	9.52
8H 4H	11.43	11.48	11.65	11.69	11.94	9.59	9.64	9.81	9.84	10.10
6H	12.05	12.10	12.31	12.34	12.61	10.53	10.58	10.79	10.81	11.09
8H	12.10	12.14	12.36	12.39	12.67	10.62	10.67	10.88	10.91	11.19
12H	12.14	12.18	12.41	12.43	12.71	10.70	10.74	10.97	10.99	11.27
12H 4H	12.49	12.54	12.74	12.77	13.04	10.93	10.98	11.18	11.21	11.48
6H	12.73	12.77	12.99	13.02	13.29	11.27	11.31	11.53	11.56	11.83

C Range: 0 - 360 Deg  
C Interval: 45.0 Deg  
Test Speed: High  
Temperature:  
Operators:  
Test Date: 2021/3/15 9:28:51

G Range: 0 - 90 Deg  
G Interval: 1.0 Deg  
Test System: Huipu CPM-1800B Goniophotometer  
Humidity:  
Test Distance: 6.029 m  
Remarks:

Report No.:

Test Time: 2021/3/15 9:28:51

## ZONAL LUMINOUS FLUX TABLE

[illegible]

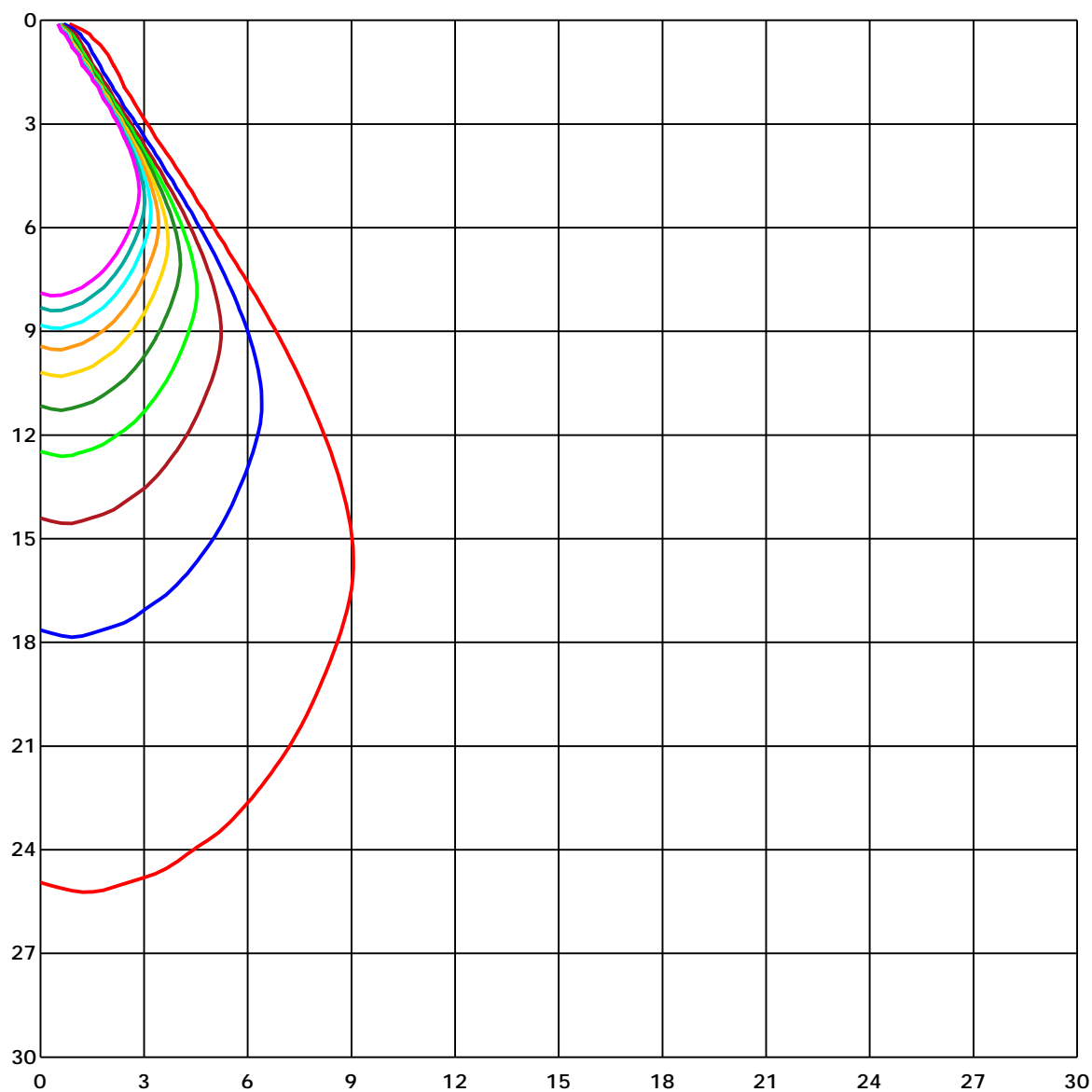
C Range: 0 - 360 Deg  
C Interval: 45.0 Deg  
Test Speed: High  
Temperature:  
Operators:  
Test Date: 2021/3/15 9:28:51

G Range: 0 - 90 Deg  
G Interval: 1.0 Deg  
Test System: Huipu CPM-1800B Goniophotometer  
Humidity:  
Test Distance: 6.029 m  
Remarks:

Report No.:

Test Time: 2021/3/15 9:28:51

## SPACE ISOLX DIAGRAM



Unit of illumination: lx

18.159	9.079
16.343	7.263
14.527	5.448
12.711	3.632
10.895	1.816

C Range: 0 - 360 Deg  
 C Interval: 45.0 Deg  
 Test Speed: High  
 Temperature:  
 Operators:  
 Test Date: 2021/3/15 9:28:51

G Range: 0 - 90 Deg  
 G Interval: 1.0 Deg  
 Test System: Huipu CPM-1800B Goniophotometer  
 Humidity:  
 Test Distance: 6.029 m  
 Remarks:

Report No.:

Test Time: 2021/3/15 9:28:51

## LUMINOUS DISTRIBUTION INTENSITY DATA

Gamma/C	C0	C45	C90	C135	C180	C225	C270	C315	C360	
G0	1129.98	1144.52	1133.83	1126.38	1129.98	1144.52	1133.83	1126.38	1129.98	
G1	1141.86	1134.12	1124.34	1114.42	1121.87	1161.06	1148.95	1136.7	1141.86	
G2	1153.49	1126.12	1108.89	1094.28	1110.24	1168.18	1166.73	1153.2	1153.49	
G3	1161.89	1110.09	1087.34	1068.47	1090.76	1167.56	1168.47	1167.56	1161.89	
G4	1160.47	1087.85	1065.06	1050.37	1070.33	1170.58	1174.0	1170.72	1160.47	
G5	1152.77	1069.82	1050.3	1037.21	1058.52	1159.64	1173.49	1173.27	1152.77	
G6	1146.52	1059.35	1033.51	1022.38	1048.34	1146.15	1159.35	1166.47	1146.52	
G7	1141.35	1042.45	1013.01	1003.01	1030.89	1139.75	1151.97	1156.66	1141.35	
G8	1135.32	1022.97	992.4	985.56	1016.24	1135.14	1146.52	1151.1	1135.32	
G9	1122.89	1004.61	974.55	966.55	998.07	1127.25	1138.19	1146.95	1122.89	
G10	1106.13	981.89	956.52	947.91	979.35	1109.4	1119.84	1141.86	1106.13	
G11	1091.74	960.88	939.33	932.86	960.88	1092.97	1103.59	1123.36	1091.74	
G12	1082.0	940.96	923.91	913.74	942.96	1082.36	1094.28	1105.19	1082.0	
G13	1066.55	922.82	906.76	896.58	925.33	1070.47	1079.31	1095.45	1066.55	
G14	1046.67	905.16	890.73	880.59	905.38	1054.15	1058.3	1085.34	1046.67	
G15	1028.09	884.11	873.72	862.34	886.04	1035.98	1038.85	1067.06	1028.09	
G16	1007.19	864.34	856.74	843.29	865.43	1015.95	1019.59	1048.12	1007.19	
G17	986.47	844.82	839.22	825.08	845.07	994.94	997.41	1028.24	986.47	
G18	965.93	824.83	821.08	804.58	822.39	974.62	978.58	1007.19	965.93	
G19	945.4	803.13	801.31	781.79	798.51	956.05	955.61	987.63	945.4	
G20	923.01	779.97	778.63	757.8	771.69	934.02	933.26	969.13	923.01	
G21	901.16	754.02	755.4	730.79	744.82	912.46	911.34	946.49	901.16	
G22	877.42	728.36	727.01	695.75	714.95	890.18	888.62	923.41	877.42	
G23	854.67	696.15	690.99	649.84	679.21	867.47	866.08	900.47	854.67	
G24	832.82	655.73	643.67	593.72	633.78	843.84	843.08	878.19	832.82	
G25	811.16	606.81	586.34	529.09	579.29	821.05	821.81	855.87	811.16	
G26	789.75	550.1	522.11	458.5	518.41	796.98	801.49	835.81	789.75	
G27	767.69	484.68	450.18	387.99	449.02	771.87	781.32	811.67	767.69	
G28	744.9	417.65	383.41	323.72	382.9	748.1	759.15	787.86	744.9	
G29	720.87	352.55	312.71	251.5	317.8	718.29	737.08	762.2	720.87	
G30	688.99	283.12	243.9	191.38	249.5	684.88	708.4	737.23	688.99	
G31	651.95	216.68	184.87	144.3	190.07	642.54	673.51	704.91	651.95	
G32	603.86	163.64	144.34	114.43	148.3	591.21	631.23	665.29	603.86	
G33	550.5	129.55	117.88	94.25	118.93	533.96	577.36	618.91	550.5	
G34	491.47	106.72	97.6	76.73	98.72	469.66	519.06	565.22	491.47	
G35	424.95	87.35	79.68	62.3	82.18	402.38	452.18	502.74	424.95	
G36	363.49	69.1	67.5	52.6	66.34	339.35	385.41	433.93	363.49	

C Range: 0 - 360 Deg

C Interval: 45.0 Deg

Test Speed: High

Temperature:

Operators:

Test Date: 2021/3/15 9:28:51

G Range: 0 - 90 Deg

G Interval: 1.0 Deg

Test System: Huipu CPM-1800B Goniophotometer

Humidity:

Test Distance: 6.029 m

Remarks:

Report No.:

Test Time: 2021/3/15 9:28:51

## LUMINOUS DISTRIBUTION INTENSITY DATA(Continue 1)

Gamma\C	C0	C45	C90	C135	C180	C225	C270	C315	C360	
G37	298.57	58.3	56.34	47.76	56.34	271.78	320.67	372.72	298.57	
G38	232.05	50.42	50.49	42.82	50.34	209.81	253.75	305.08	232.05	
G39	176.84	45.11	46.93	39.08	46.09	161.21	190.25	237.54	176.84	
G40	138.27	41.33	41.87	35.88	42.24	130.35	146.89	180.4	138.27	
G41	112.54	37.51	38.49	34.53	39.11	107.99	118.97	142.63	112.54	
G42	93.16	34.5	35.4	30.5	36.17	88.04	98.29	118.35	93.16	
G43	74.81	31.73	33.0	28.35	33.62	72.95	79.64	95.52	74.81	
G44	61.21	29.26	31.3	26.61	31.41	59.72	63.61	78.7	61.21	
G45	52.23	27.3	29.55	25.26	29.55	52.27	54.05	64.7	52.23	
G46	45.47	25.55	27.66	24.28	28.1	47.29	47.47	55.4	45.47	
G47	41.11	24.46	26.61	24.5	26.97	43.29	42.16	49.14	41.11	
G48	37.4	23.55	25.84	22.72	26.13	39.87	38.93	44.89	37.4	
G49	34.53	22.79	24.54	22.06	25.34	36.6	35.62	40.97	34.53	
G50	31.62	21.92	24.35	21.45	24.61	33.95	32.6	37.48	31.62	
G51	29.19	21.3	23.74	20.83	23.81	31.62	30.1	34.5	29.19	
G52	26.64	20.61	23.01	20.25	23.12	29.77	28.06	31.81	26.64	
G53	25.73	19.92	22.32	19.74	22.43	27.81	27.26	30.9	25.73	
G54	24.64	19.37	21.77	19.26	21.92	27.15	25.04	29.33	24.64	
G55	23.74	18.83	19.34	17.52	21.26	26.24	25.37	28.02	23.74	
G56	23.01	18.21	20.65	18.28	20.68	25.55	23.45	25.73	23.01	
G57	22.39	17.77	19.99	17.77	20.17	23.48	22.57	24.94	22.39	
G58	21.74	17.3	19.52	17.27	18.65	23.95	22.06	24.06	21.74	
G59	21.23	16.65	18.9	16.79	17.77	23.34	22.79	23.37	21.23	
G60	20.65	17.59	18.43	16.36	18.5	22.75	20.68	22.72	20.65	
G61	20.17	15.74	17.92	15.81	18.14	22.17	20.14	22.14	20.17	
G62	19.56	15.34	15.92	15.27	15.99	21.59	19.66	21.48	19.56	
G63	17.37	14.72	16.58	14.79	16.97	20.94	19.01	20.86	17.37	
G64	18.5	14.25	16.07	14.32	16.47	20.43	18.61	20.36	18.5	
G65	16.32	13.89	15.59	13.27	16.03	18.03	18.07	19.81	16.32	
G66	17.67	13.49	14.98	13.16	15.48	17.45	18.47	19.37	17.67	
G67	17.12	13.05	14.36	12.61	13.12	18.72	17.16	18.94	17.12	
G68	16.76	13.23	13.7	12.03	12.54	18.21	17.16	18.47	16.76	
G69	16.18	12.14	13.12	11.27	13.63	17.59	16.28	17.96	16.18	
G70	15.63	11.74	12.43	10.54	12.98	17.05	15.74	17.52	15.63	
G71	15.19	11.01	11.67	10.43	12.0	16.5	15.27	16.9	15.19	
G72	14.76	10.32	11.96	9.05	11.27	15.99	14.87	14.61	14.76	
G73	12.79	9.56	10.29	8.58	10.58	15.56	14.43	14.21	12.79	

C Range: 0 - 360 Deg

C Interval: 45.0 Deg

Test Speed: High

Temperature:

Operators:

Test Date: 2021/3/15 9:28:51

G Range: 0 - 90 Deg

G Interval: 1.0 Deg

Test System: Huipu CPM-1800B Goniophotometer

Humidity:

Test Distance: 6.029 m

Remarks:

Report No.:

Test Time: 2021/3/15 9:28:51

## LUMINOUS DISTRIBUTION INTENSITY DATA(Continue 2)

[illegible]

C Range: 0 - 360 Deg  
C Interval: 45.0 Deg  
Test Speed: High  
Temperature:  
Operators:  
Test Date: 2021/3/15 9:28:51

G Range: 0 - 90 Deg  
G Interval: 1.0 Deg  
Test System: Huipu CPM-1800B Goniophotometer  
Humidity:  
Test Distance: 6.029 m  
Remarks: