



# User Guide TecLED

Revit 2021

TEC=LED

## Loading Material Textures

TecLED components contain manufacturer specific render materials. Revit will try and find these materials on your computer in the following directory:

C:\LocalRVT\Bimstore\Materials\TecLED

The first time you use these components you will need to copy the images contained in the 'Textures' folder included in the download into the file path above (you may need to create the folder structure if you have not used bimstore components with custom materials before).

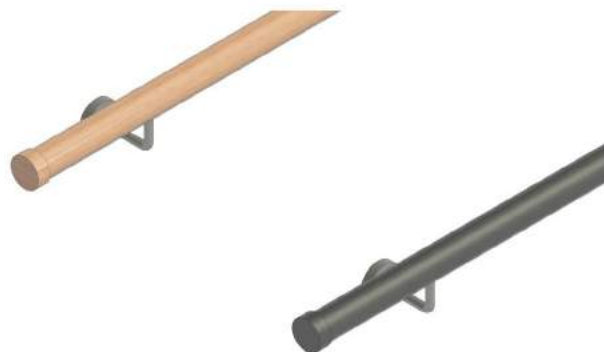
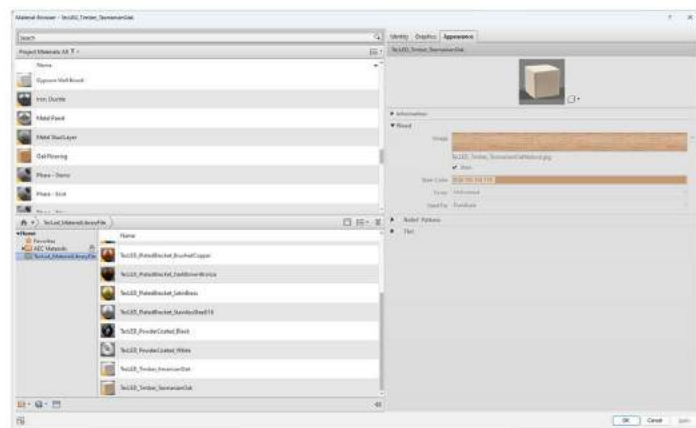
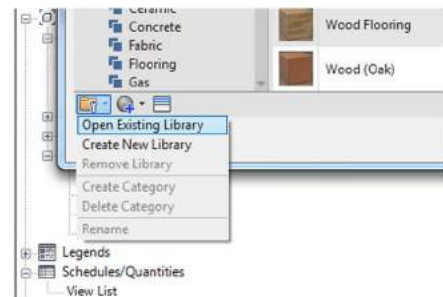
The TecLED textures will now load the custom render finishes from this location when the file is opened.



## Loading the Material Library File

TeclED offer a number of materials that can be applied to their components. These materials are available in a Material Library (.adsklib) file. To load this material library into your project please follow the listed steps below;

1. Go to 'Materials' under Manage Tab
2. In the bottom left corner of the Materials browser is a folder, select this then 'Open Existing Library' as shown.
3. Navigate to the where you saved the downloaded content and select 'TecLed\_MaterialLibraryFile.adsplib'
4. With the material library loaded, select the desired material then click the arrow or double click to load the material into your project



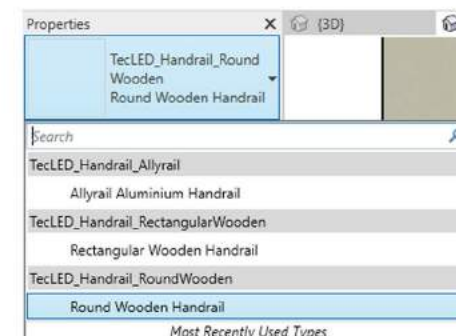
## Loading the components into your project

These components have been created as a Line Based families with standard configurations pre-defined as types. You can add the Railing component into your project using the following method.

1. Open the Revit file containing your project and navigate to an appropriate view.
2. Go to the insert tab on the Revit ribbon and select 'Load Family'



3. Navigate to the location of the saved component that you have downloaded, select the component and click 'Load'.
4. The component is now embedded into your project and ready to be placed.
5. The various types can be selected from the 'Properties Tab' on the the left of your screen. To do so, select the component (turning it blue) and simply choose the type you require from the range as shown below:



## Placing the family on a work plane

Due to the nature of a Line-Based family, they need to be placed on a face or a work plane. To place the component on a work plane, use the following method.

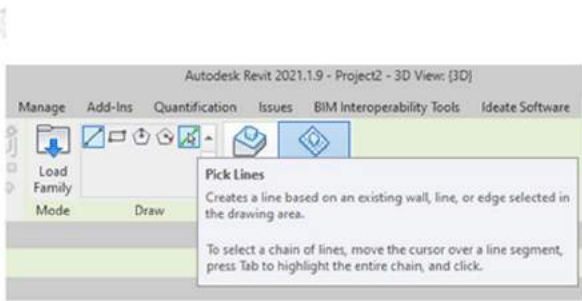
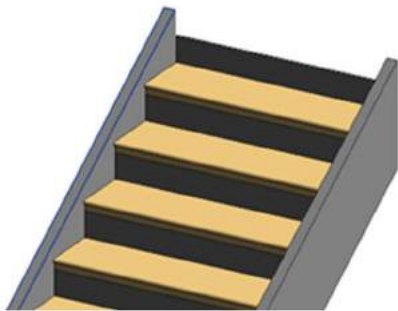
On the 'Architecture' tab select 'Component' and choose your handrail type.

Select 'Plane on Work Plane' and change the 'Placement Plane' to 'Pick...'



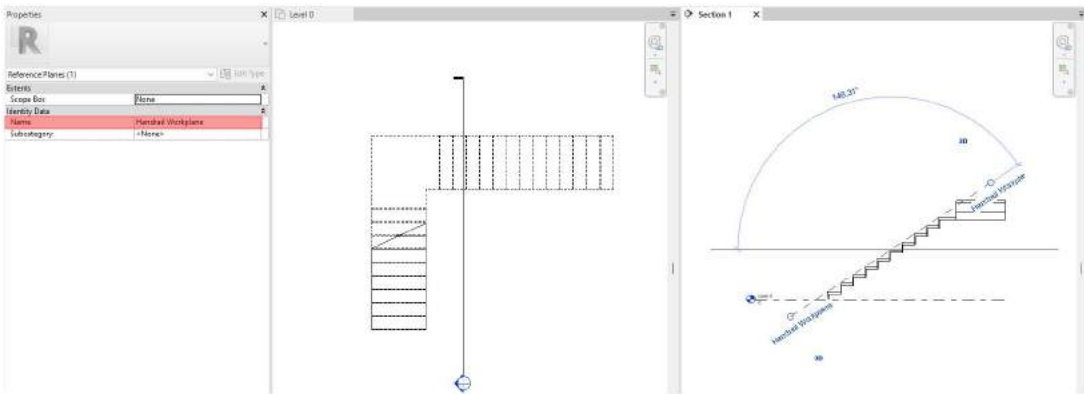
A new box will appear select 'Pick a plane' and click 'OK'

Now you can select the plane which you want the handrail to work off, in the example below I have selected the top face of the stringer. Once selected go back to the 'Draw' tools and either draw a Line or Pick Lines.



To flip/mirror the handrail select the handrail and press the SPACE bar on your keyboard.

In the event there is no stringer on the stairs, you will need to draw a 'Reference Plane' in an appropriate view and name the Reference Plane. For this example, I have named the Reference Plane 'Handrail Workplane'.

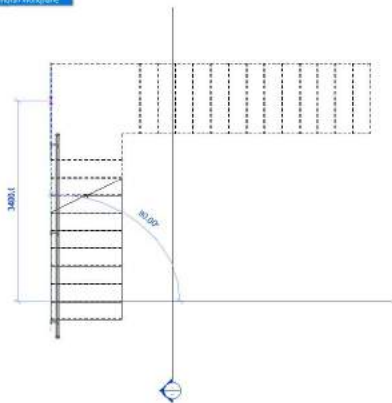


To place the handrail in your project, go to a 'Floor Plan' view, select your handrail from the 'Component' section, select 'Place on Work Plane' and change 'Placement Plane' to the named 'Reference Plane' as per example above 'Handrail Workplane'.



You will now be able to draw your handrail in the named plane.

The component is now associated with the work plane and can be adjusted further using the family specific instance parameters.

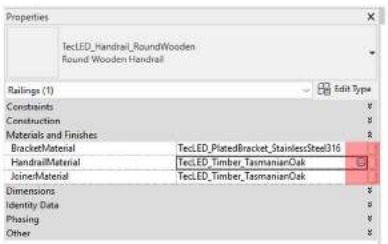


## Adjusting the Instance Parameters

1. With the component selected, the 'Properties' box will appear on the screen. Under the 'Construction' heading is the instance parameter labelled 'TopOfHandrailFromLevel' adjust this dimension to suit your project then click apply.

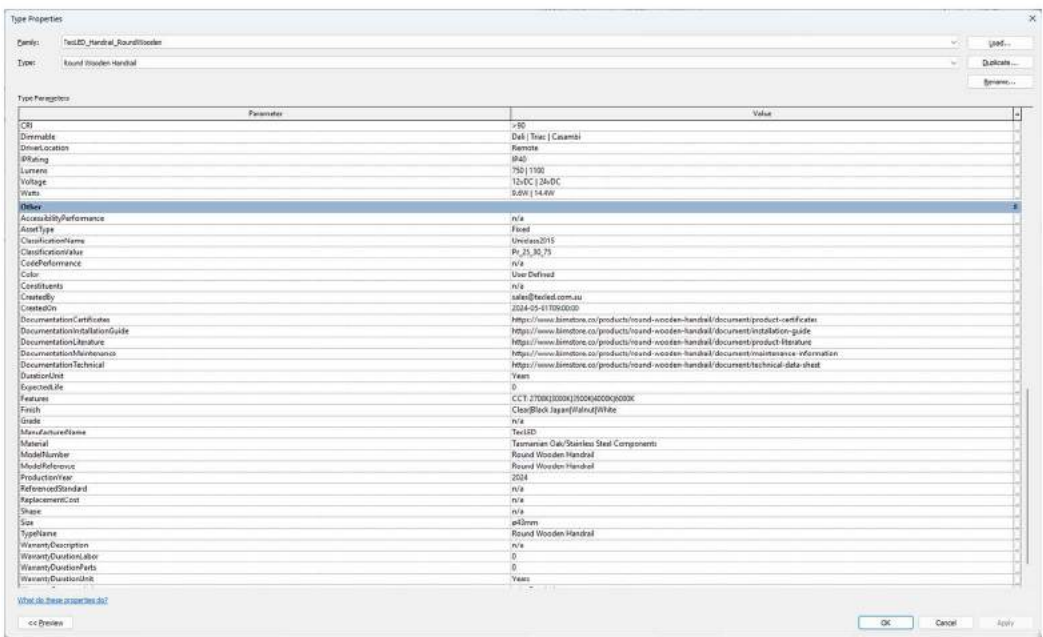
2. The 'Construction' heading also has the parameters to adjust the Joiner types (End Cap / 35° Bend / 90° Bend) and the lighting options of the product. To adjust these simply select required type from available options and click apply.

3. Under the heading 'Materials and Finish' are the parameter to adjust the materials for the Handrail, Joiners and Brackets. To adjust these materials click on the highlighted button located to the right of the material parameter and change the material via the 'Materials Browser' and click apply.



## Manufacturer specific data

The TecLED families contain a host of technical and manufacturer specific data to assist the user when building up their project or when scheduling. To access the data embedded into the families, simply select the desired component and click the 'Edit Type' button at the head of the 'Properties' tab. All this information can be scheduled.



## Other Notes

This component is for design intent only and the data contained within should be treated as such. Please contact the manufacturer for more details and product literature.

## Revision

Version 1.0 - First Issue



Spaceworks  
Benton Park Road  
Newcastle Upon Tyne  
NE7 7LX

+44(0)844 800 6660  
[info@bimstore.co.uk](mailto:info@bimstore.co.uk)  
[www.bimstore.co](http://www.bimstore.co)

© copyright bimstore 2019